



 150+ Projects

 Quick Delivery

 Easy Installation

BUILDING STRENGTH IS OUR MOTTO

— Rebar Coupler

— MBT Coupler

— Building Material



FOUNDER :



**NILESHBHAI
TARPARA**
DIRECTOR



**ATULBHAI
TARPARA**
DIRECTOR

**Tarpara
Brothers**

ABOUT US

VVT Infratech delivers structural connections built on 15 years of expertise and the strength of the Make in India initiative. We are masters in manufacturing high precision Rebar and MBT Couplers from our Rajkot, Gujarat facility. Beyond production, we provide an extensive selection of building materials (Sleeve Couplers, Anchor Cones, etc.). For major projects, we deploy our expert teams to provide On-Site Threading and Technical Support, ensuring seamless execution. Our sales network is managed through our Rajkot Head Office and Ahmedabad Branch.

ENGINEERING STRENGTH. PRECISION. PERFORMANCE.

OUR CAPABILITIES AT A GLANCE:



**4 Advanced CNC
Machines**
ensuring unmatched
precision & quality.



50+ Skilled Staff
dedicated to excellence
in every project.



**28 Threading & Forging
Sets** delivering
high strength,
reliable couplers.



6+ States Covered
with a strong network
of satisfied clients.



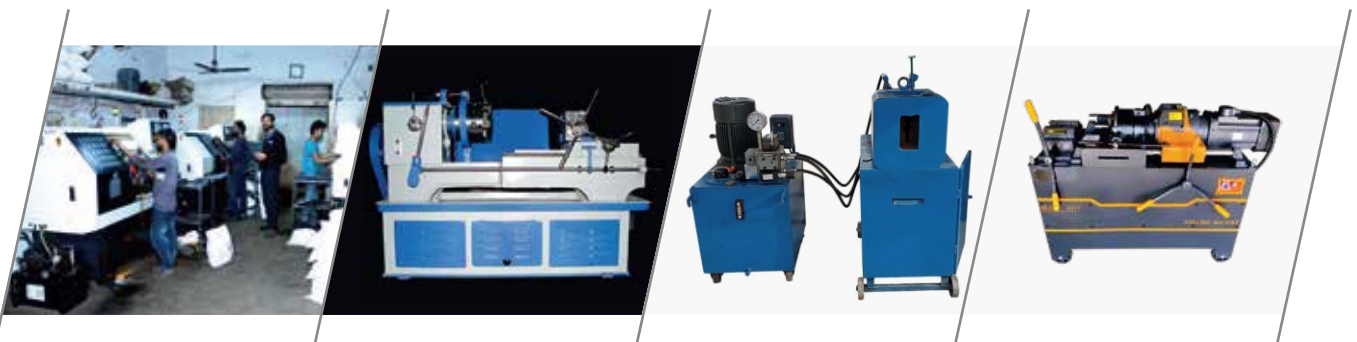
2 Mobile Tempo Vans for
on-site threading services
ensuring flexibility and efficiency
at project locations.



150+ Projects Completed
including Government,
Private, Metro, and
Bridge Works.



**Proud collaborations with
authorities like AUDA, RUDA, and
other leading builders
and infrastructure giants.**





VISION

"To Transform Structures Worldwide with TMT Joint Materials for a Sustainable Tomorrow."



MISSION

"To empower Builders and Engineers with Unrivalled TMT Joint Materials by Setting the Benchmark for Structural Excellence."



CORE VALUES



Reinforcing Bar Couplers

For the Construction Industry

ISO 9001: 2015 Certified Company
CE Certified Company

INNOVATION:

We foster a culture of creativity and embrace innovation, constantly seeking new and better solutions for the construction industry.

SUSTAINABILITY:

We integrate sustainable practices into every aspect of our business, from construction methods to resource management.

SAFETY:

The safety of our employees, customers, and the communities we serve is our top priority. We adhere to the highest safety standards in all our operations.

INTEGRITY:

We uphold the highest standards of honesty, transparency, and ethical behavior in all our interactions.

CONTINUOUS IMPROVEMENT:

We are committed to ongoing learning and improvement, always seeking ways to enhance our products and processes for better services.

ACCOUNTABILITY:

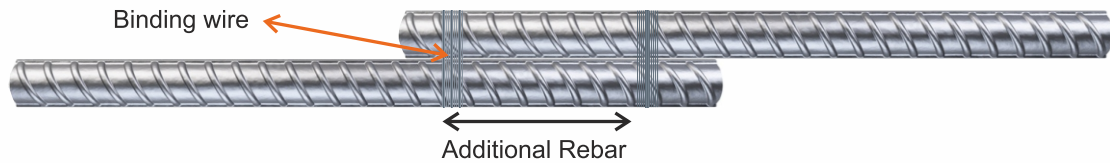
We take ownership of our actions and decisions, holding ourselves accountable to our customers.

OUR LEGACY:

Driven by innovation and engineering excellence, VVT Infratech Pvt. Ltd. continues to build India's future — one strong connection at a time.

BAR-END PREPARATION PROCESS

CURRENT PRACTICES IN LAPPING



COUPLER ASSEMBLING PROCESS

OPERATION : 1

Make parallel face of bar by cutting in saw machine



OPERATION : 2

The sawn cut end of the reinforcing bar is enlarged by cold forging process, thus increasing its diameter



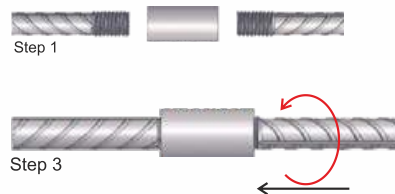
OPERATION : 3

Standard ISO metric threads are then cut onto the enlarged end & covered by plastic caps to protect the thread of rebar.



OPERATION : 4

Finally splice the rebar by using threaded Unbrako rebar couplers.



TYPICAL TEST RESULTS



Nominal Bar Size Dia. mm	Yield Stress (N/mm ²)	Ultimate Stress (N/mm ²)	Elongation %	Failure Mode
16	534	588	18	Bar Break
■	■	■	■	■
■	■	■	■	■
■	■	■	■	■
■	■	■	■	■

Rebar Lapping (The Old Way)

- Fails load test; structural continuity is compromised.
- Wastes steel, causes congestion, and slows installation.
- Difficult inspection and higher overall cost.

VVT Couplers (The Smart Way)

- Simple, reliable inspection & highly economical system.
- Guaranteed strength with 100% structural integrity.
- Zero waste, clean connection, & rapid installation.

Click on
the product
name tab for
more info

COUPLER TECHNICAL PARAMETERS

Click on
the product
name tab for
more info

REGULAR

Material - EN8D
(Customized as per your order.)

ROLL TAK

COUPLER	COUPLER SIZE	COUPLER COAD	INNER DIAMETER & THREADING
16 MM	25X40	VI01	ID = 15.8 MM THREADING = 18X2.5 MM
	28X40	VI02	
20 MM	32X50	VI03	ID = 21.00 MM THREADING = 23.3X2.5 MM
	32X52	VI04	
	32X54	VI05	
25 MM	40X60	VI06	ID = 26.00 MM THREADING = 29X3 MM
	40X62	VI07	
	40X64	VI08	
	42X60	VI09	
	42X62	VI10	
	42X64	VI11	
32 MM	50X64	VI12	ID = 32.20 MM THREADING = 35X3 MM
	50X72	VI13	
	50X78	VI14	

COUPLER	COUPLER SIZE	COUPLER COAD	INNER DIAMETER & THREADING
16 MM	25X40	VI15R	ID = 14.5 MM THREADING = 16X2.5 MM
	28X40	VI16R	
20 MM	32X50	VI17R	ID = 19.5 MM THREADING = 20X2.5 MM
	32X52	VI18R	
	32X54	VI19R	
25 MM	40X60	VI20R	ID = 23.00 MM THREADING = 25X3 MM
	40X62	VI21R	
	40X64	VI22R	
	42X60	VI23R	
	42X62	VI24R	
	42X64	VI25R	
32 MM	50X64	VI26R	ID = 29.7 MM THREADING = 32.50X3 MM
	50X72	VI27R	
	50X78	VI28R	

REDUCER

COUPLER	COUPLER SIZE	COUPLER COAD	INNER DIAMETER & THREADING
20X16MM	32X50	VI29	ID = 21.00 MM X 15.8 MM THREADING = 23.3 X 2.5 MM / 18 X 2.5 MM
	32X52	VI30	
	32X54	VI31	
25X16 MM	40X60	VI32	ID = 26.00 MM X 15.8 MM THREADING = 29 X 3 MM / 18 X 2.5 MM
	40X62	VI33	
	40X64	VI34	
	42X60	VI35	
	42X62	VI36	
	42X64	VI37	
25X20 MM	40X60	VI38	ID = 26.00 MM X 21.00 MM THREADING = 29 X 3 MM / 23.3 X 2.5 MM
	40X62	VI39	
	40X64	VI40	
	42X60	VI41	
	42X62	VI42	
	42X64	VI43	
32X16 MM	50X64	VI44	ID = 32.20 MM X 15.8 MM THREADING = 35 X 3 MM / 18 X 2.5 MM
	50X72	VI45	
	50X78	VI46	
32X20 MM	50X64	VI47	ID = 32.20 MM X 21.00 MM THREADING = 35 X 3 MM / 23.3 X 2.5 MM
	50X72	VI48	
	50X78	VI49	
32X25 MM	50X64	VI50	ID = 32.20 MM X 26.00 MM THREADING = 35 X 3 MM / 29 X 3 MM
	50X72	VI51	
	50X78	VI52	

REDUCER - ROLL TAK

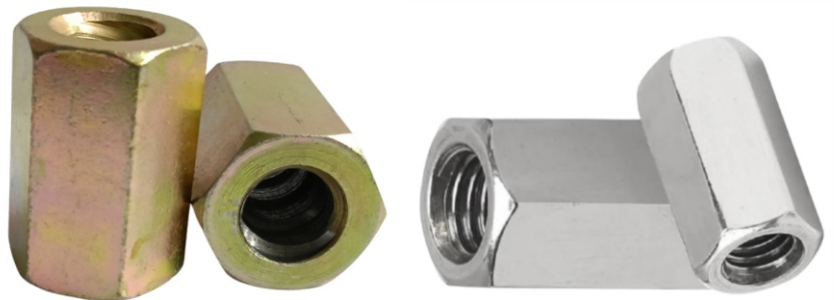
COUPLER	COUPLER SIZE	COUPLER COAD	INNER DIAMETER & THREADING
20X16MM	32X50	VI53R	ID = 19.5 MM X 14.5 MM THREADING = 20 X 2.5 MM / 16 X 2.5 MM
	32X52	VI54R	
	32X54	VI55R	
25X16 MM	40X60	VI56R	ID = 23.00 MM X 14.5 MM THREADING = 25 X 3 MM / 16 X 2.5 MM
	40X62	VI57R	
	40X64	VI58R	
	42X60	VI59R	
	42X62	VI60R	
	42X64	VI61R	
25X20 MM	40X60	VI62R	ID = 23.00 MM X 19.5 MM THREADING = 25 X 3 MM / 20 X 2.5 MM
	40X62	VI63R	
	40X64	VI64R	
	42X60	VI65R	
	42X62	VI66R	
	42X64	VI67R	
32X16 MM	50X64	VI68R	ID = 29.7 MM X 14.5 MM THREADING = 32.5 X 3 MM / 16 X 2.5 MM
	50X72	VI69R	
	50X78	VI70R	
32X20 MM	50X64	VI71R	ID = 29.7 MM X 19.5 MM THREADING = 32.5 X 3 MM / 20 X 2.5 MM
	50X72	VI72R	
	50X78	VI73R	
32X25 MM	50X64	VI74R	ID = 29.7 MM X 23.00 MM THREADING = 32.5 X 3 MM / 25 X 3 MM
	50X72	VI75R	
	50X78	VI76R	

Click on the product name tab for more info

TIE ROD CONNECTOR

FOR TIE ROD
16,18,20,22 AND 24 MM

SIZES	
30x35	30x100
30x50	36x35
30x75	36x50



ANCHOR CONE

FOR TIE ROD
16,18,20,22 AND 24 MM

SIZES	
90MM	125MM
100MM	150MM
110MM	

CLIMBING CONE

FOR TIE ROD
16,18,20,22 AND 24 MM



MBT COUPLER



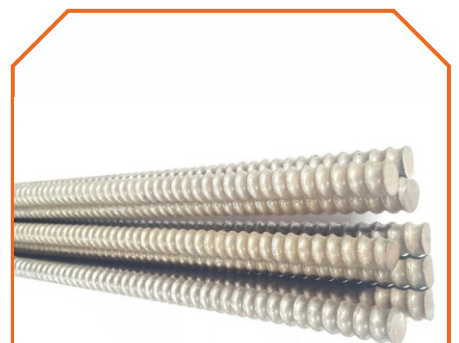
SIZES	
12MM	25MM
16MM	32MM
20MM	

SHEET METAL COUPLER



SIZES	
40x40	50x60
40x50	60x60
50x50	

TIE ROD



SIZES	
16MM	22MM
18MM	24MM
20MM	

Click on the product name tab for more info



**ANCHOR CONE WITH
NUT AND CUP**

FOR TIE ROD
16,18,20,22 AND 24 MM



COMBI / SUPER PLATE

SIZES

100X100 PLATE

16MM WING NUT



ANCHOR NUT

SIZES

90MM 2 LEG/3LEG

100MM 2LEG/3LEG

110MM 3LEG



SLEEVE COUPLER



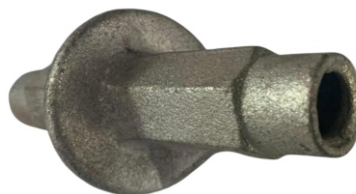
BRC COUPLER



JOINT PIN



**PVC CONE WITH
STEEL CORE**



WATER STOPPER



**PROP NUT
WITH HANDLE**



SHUTTERING CLAMP

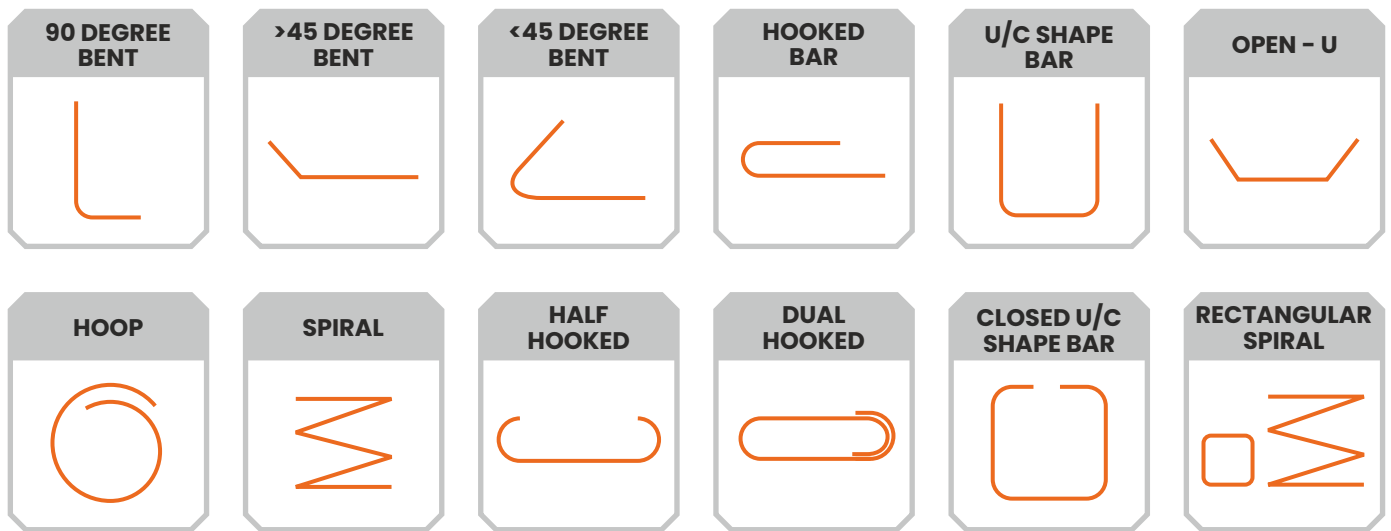


BASE & U - JACK

INTRODUCTION OF GFRP REBAR

Glass Fiber Reinforced Polymer (GFRP) rebar is a non-metallic reinforcement material used as an alternative to traditional Steel reinforcement in concrete structure. It is composed of High-strength glass fibers embedded in a polymer resin matrix, typically epoxy. This combination offers superior Corrosion resistance, lightweight properties, and high tensile strength. GFRP rebars are widely used in construction applications where durability and resistance to harsh environmental conditions, such as marine, industrial, and deicing salt environments, are critical. Their non-conductive nature also makes them ideal for projects requiring electromagnetic neutrality.

PRESENTING GFRP BENT ELEMENTS



3 MM 4 MM 5 MM 6 MM 8 MM 10 MM 12 MM



ADVANTAGES OF GFRP REBAR

**STRONGER
THAN STEEL**



ELECTRICITY



CHEAPER



**REDUCED
OVERLAP COST**



LIGHTER



**NO THEFT
RISK**



DURABILITY



**EASY TO
TRANSPORT**



**ANTI
CORROSION**



**EASY TO CUT
& INSTALL**



**GFRP WITH
TMT BARS**



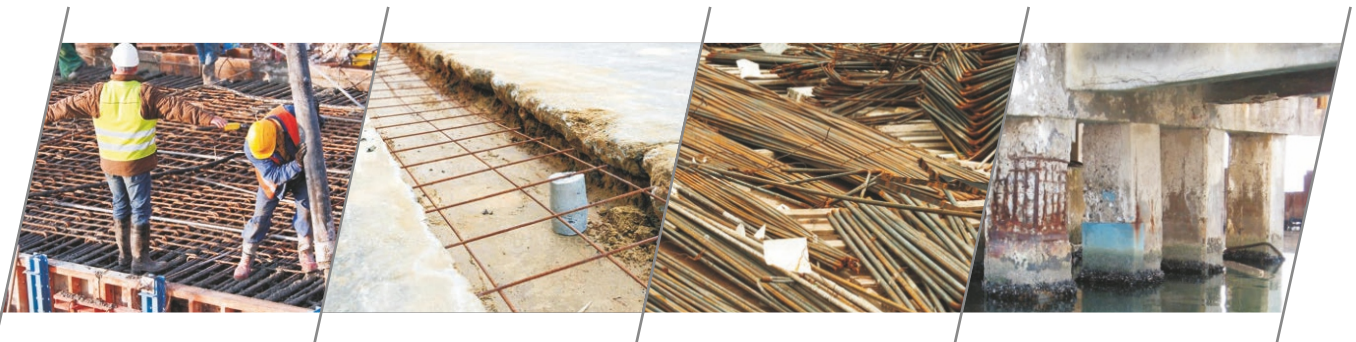
**Low
Environmental
Impact**



**Highly Chemical
Resistant**



Non-magnetic



16 MM



20 MM



32 MM



UP 40 MM



OUR CUSTOMERS



OUR GOVT. PROJECTS



GOVERNMENT ENGINEERING
COLLEGE KANKOT, Rajkot



FAMILY COURT RAJKOT



ITI BUILDING SAURASHTRA
UNIVERSITY, RAJKOT



JAMNAGAR POLICELINE
QUARTERS



2ND RING ROAD RIVER
KANGSIYALI BRIDGE, RAJKOT



AHMEDABAD METRO PHASE 1



RTO OFFICE, AHMEDABAD



JAMNAGAR INCOME TAX OFFICE



SARKHEJ ITI, AHMEDABAD



MOTA MAUVA AAVAS YOJNA,
RAJKOT



AVADH ROAD - AAVAS YOJNA,
RAJKOT



BAPS GONDAL - BOYS HOSTEL

OUR PROJECTS



AALAP ISTORIA



THE GRAND PALACE



BEAU FORT PARK



KRUTI ONELLA



SANSKAR SANIDHYA



DWARKADHISH HEIGHTS



HARE KRISHNA HEIGHTS



STAVYA SKY



TWIN STAR



ELIXIR



SERENITY GARDEN



RVA (GIFT CITY)



SHYAMAL ICONIC



PUSHTI HILLS



SWAYAM ATULYAM



ICONIC SAFALIYA AHMEDABAD



THE VERITY



SHAFALYA VERITAS



VERTIS SHAFALIA



ROYAL OPULENCE

OUR TEST REPORTS





VVT INFRATECH PVT. LTD

+91 99246 88818

marketing@vvtcoupler.com info@vvtinfratech.com

www.vvtinfratech.com

Head Office

Shed No. 135, Nutan Ind. Street No. 3, Opp. Ganesh Hardning,
Mavdi Bypass Road, Rajkot, 360004, Gujarat, India

Branch Office

Unit No.: G-02, 1401, Aakash Residency, Club -07 Road,
Sela, Ahemdabad, 380058, Gujarat, India

Our Global Reach

